

The purpose of the TP&I News is to provide the latest news for the shipowners, charterers, as well as any other maritime interests around the globe. Each issue of TP&I News will include a focused review section of several articles on a topic of current interest.¹

1. Amendments To Marine Pollution Fines In Turkey

Marine pollution fines are updated annually, and our client alert published in December 2022 had set out the fines updated for 2023. In a recent interim amendment, the following two further updates were introduced.

A. Fines for “garbage and sewage discharged by vessels or any other marine vehicles”, were calculated as per the table below depending on the gross tonnage of the polluting vessel:

With the recent amendment, the additional amount of TRY 50.23 per GT applicable for vessels exceeding 5,000 GT has been decreased to TRY 11.59 per GT. By way of example, the impact of this amendment on a fine issued to a 15,000 GT vessel is a reduction of TRY 386,400.00 which corresponds approximately to USD 20,000.00 as per the current exchange rate.

B. The amendment introduces an upper limit applicable to vessels and other marine vehicles exceeding 100,000 GT. Pursuant to this update vessels exceeding 100,000 GT shall pay the same fine as that applicable to a vessel of 100,000 GT. For example, if the polluting vessel has a gross tonnage of 120,000 GT, the pollution fine will be calculated over 100,000 GT.

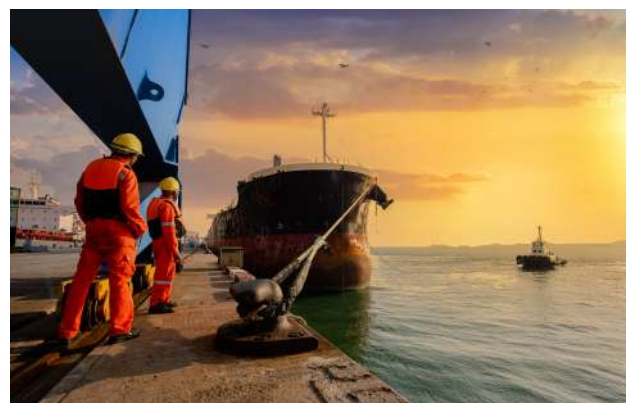


Source: Ersoy BİLGEHAN Lawyers And Consultants

Up to 1,000 (inclusive) GT	TRY 502.48 per GT
Between 1,000 and 5,000 (inclusive) GT	An additional TRY 100.50 per GT
Over 5,000 GT	An additional TRY 50-23 11.59 per GT

2. PSC Focus on Ships with Mechanical and Electrical Failure Qingdao and Shanghai Ports

Local authorities in Qingdao and Shanghai ports have recently announced tighter control on ships with mechanical and electrical failures, resulting in some ships being detained consecutively due to PSC inspection.



¹ Disclaimer

All the information provided in this newsletter is provided on an “as is” and “as available” basis and you agree that you use such information entirely at your own risk. The TP&I and corresponding author(s) (hereinafter Parties) gives no warranty and accepts no responsibility or liability for the accuracy, or the completeness of the information and materials contained. Under no circumstances will the Parties be held responsible or liable in any way for any claims, damages, losses, expenses, costs or liabilities whatsoever. Including, without limitation, any direct or indirect damages for loss of profits, business interruption or loss of information) resulting from or arising directly or indirectly from your use of or inability to use this newsletter or any news linked to it, or from your reliance on the information and material on this newsletter, even if the Parties has been advised of the possibility of such damages in advance. This newsletter also may contain links to other internet sites. Such links are provided as a piece of information for the readers. As the Parties has no control over third-party sites, the reader hereby acknowledges and agrees that the Parties are not held responsible or liable for any content or material on such sites. In providing such links, the Parties do not in any way, expressly or implicitly, endorse the linked sites or resources or the respective contents thereof. The reader further acknowledges and agrees that the Parties shall not be responsible or liable, whether directly or indirectly, for any damages or loss caused or sustained by the reader, in connection with any use or reliance on information or material obtained from third-party sites.

- **Qingdao port**

Local authorities issued a notice to ships via local agents informing ships to focus more on safety management, particularly on main engine, steering engine and boiler etc., which need to be properly tested and checked before entering or leaving the port to avoid delay to ships schedule due to PSC inspection resulting from mechanical and electrical failures. A 'Self -checklist for ships Intending to Enter Qingdao Port ' is attached to the notice suggesting 9 items (falling into three categories M/E &A/E ,Main and Emergency Power and Steering Gear) are to be checked in advance.

- **Shanghai port**

Ships will be detained by PSCOs if found with mechanical and electrical failures or main engine malfunction, and will not be permitted to depart until rectification is made.

Wusong MSA also issued a similar notice announcing enhanced safety inspection to ships entering Shanghai section of Yangtze River. Ships are required to test main engine, steering system and emergency equipment etc. to ensure they are in good working condition. Starting from 01 April, 2023.

- **Other ports**

At this moment, there hasn't been any particular requirement for ships to carry out self-testing and inspection to mechanical and electrical equipment or main engine etc. before arrival. However, ships may be delayed in some ports due to resumption of on-site PSC inspection this year, which has been replaced by remote inspection during the pandemic.

For your easy reference, please see below illustration on the fishing ban in different waters of China.

Source: Oasis P&I Services Company Limited

3. JWC adds Sudan to high-risk listed areas

Sudan has been added to London's Joint War Committee (JWC) list of marine areas deemed high risk. Any ships sailing into the country's waters will need to pay an additional war risk premium and also seek approval from their insurer.

Despite the ongoing clashes between the Rapid Support Forces (RSF) and the army in the capital city of Khartoum, Port Sudan is currently all quiet and operating normally.



Source: Mutual Marine Services Al Mushtaraka LTD.

Please also check our website for circulars of each month.

For Turkish version please visit our website.

Should you need any further information, please do not hesitate to contact us at info@turkpandi.com

Tel: +90 850 420 8136 // Fax: +90 216 545 0301

www.turkpandi.com